

We are a product sponsor of the
Immune Deficiency Foundation (IDF) and
GBS/CIDP Foundation International

Other Patient Resources:



www.primaryimmune.org

The Immune Deficiency Foundation is dedicated to improving the diagnosis, treatment, and quality of life of persons with PI.



www.igliving.com

Join the immune globulin community with access to IG Living magazine, advocacy groups, expert opinions, and patients with rare diseases.



www.gbs-cidp.org

The GBS|CIDP Foundation International supports individuals and their families affected by Guillain-Barré syndrome (GBS), chronic inflammatory demyelinating polyneuropathy (CIDP), and related syndromes.



www.info4pi.org

The Jeffrey Modell Foundation directs efforts toward early diagnosis, meaningful treatments, equal access to care, and ultimately, a cure for Primary Immunodeficiency.



845-469-2042 | www.korumedical.com

KORU Resources

korumedical.com

facebook.com/korumedical

twitter.com/korumedical

instagram.com/korumedical

bit.ly/koruvids

Freedom60® Training Videos:
korumedical.com/f60videos

FreedomEdge® Training Videos:
korumedical.com/fevideos

info@korumedical.com



845-469-2042 | www.korumedical.com

The Freedom60® and FreedomEdge® Syringe Infusion Systems, Precision Flow Rate Tubing™ and HigH-Flo Subcutaneous Safety Needle Sets™ are registered trademarks of KORU Medical Systems and are compliant with Medical Device Directive 93/42/EEC. KORU Medical Systems is ISO 13485 certified.

© 2024 KORU Medical Systems. All Rights Reserved.

KORU_BR_FreedomPatient_XXXXXX

FREEDOM TO CHOOSE
with the Freedom™ Integrated Infusion System for at
home Subcutaneous Immunoglobulin (SCIg) Infusion



Ask if SCiG is right for you.



845-469-2042 | www.korumedical.com

Perforation ->

Why SCIg vs IVIg?



Subcutaneous immunoglobulin (SCIg) is infused slowly into the fatty layer under the skin as opposed to Intravenous immunoglobulin (IVIg), which is delivered through a vein.

SCIg is typically administered on a more frequent basis than IVIg. It provides stable blood levels, decreases side effects¹ and improves overall quality of life so you can get back to living your life to the fullest.

The best part is that you can infuse in the comfort of your own home!

Benefits of SCIg with Freedom60®/FreedomEdge®



- **Infusion on your terms** – wherever & whenever
- **Simple to use** – no batteries, just load & go
- **Broad range** – indicated for many drugs
- **Short preparation time** – works with Hizentra® pre-filled 20 mL syringes and 50 mL syringes with Freedom60® PFS Adapter

Ask if at home SCIg is right for you

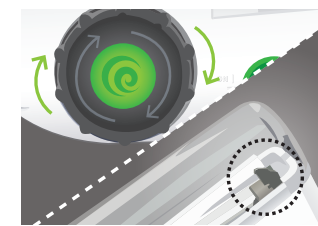
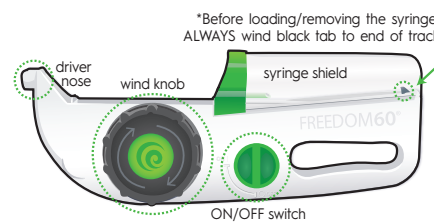


Take a quick survey and ask your Specialty Pharmacist or Nurse to discuss if moving from IVIg to SCIg is right for you.

Questions	Yes	No	Maybe
Do you like to travel?			
Do you want flexibility to infuse when you want outside of a fixed schedule?			
Do you want to speed up your infusion times but are willing to infuse more often?			
Do you have concerns about self-infusion?			
Do you have concerns about adjusting flow rates and would consider pumps/needles with fixed flow rates?			

Infuse in 3 easy steps with the Freedom Systems

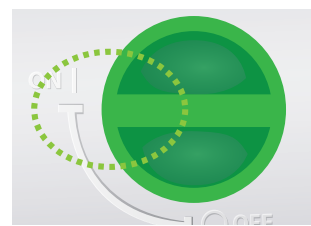
Freedom60® INFUSION SYSTEM



Wind
Wind large knob so black tab is at end of its track*.

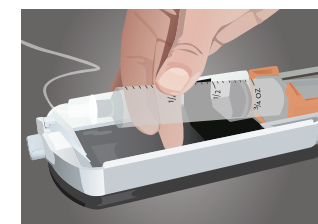


Load
Load the prepared syringe into driver.

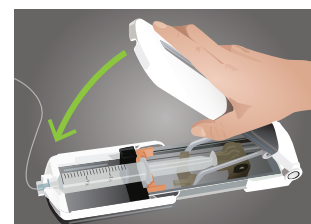


Go
Turn the ON/OFF switch on and go!

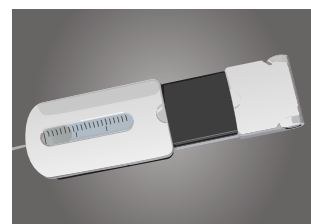
FreedomEDGE® INFUSION SYSTEM



Load
Load prepared 20 ml or 30 ml syringe.



Close
Close top lid to start the infusion.



Go
Check infusion using progress window.

Reduce adverse effects with Precision™ tubing and High-Flo™ needles

Flow Rate

Your provider will help select the appropriate Precision Flow Rate Tubing™ to best fit your drug. For patients who experience site reactions, a slower flow rate tubing set is recommended.

Most common Precision Flow Rate Tubing™ for SCIg

Slow	Moderate	Rapid
F275	F500	F1200
F420	F600	F2400
	F900	

Needle Length

If the selected needle is too short and the opening is too close to the dermis, site irritation and leaking may occur. The opening of the needle should be well within the sub-q tissue. Needle length should be determined according to how much sub-q tissue you have. 12 mm needles tend to work well with average sized patients, while 9 mm needles may be needed for very thin adults or children. Similarly, larger patients may require 14 mm needles.

**High-Flo™
SUBQ
NEEDLE SET**

4mm 9mm

Sub-q tissue Dermis Muscle

Optimal Needle Length

Drug

Actual 26G needle sizes
4, 6, 9, 12 & 14 mm lengths with options in 26 & 24* gauge

*24G is generally used for large volume infusions. Not available in 4 mm.

Dry Priming

Needles should be inserted dry as medication may cause site irritation.

Needle Design

High-Flo's backcut needle tip minimizes tissue damage, scarring and local site reactions.¹ The flexible hinged butterfly wings make for easy insertion and removal and include a safety closure for reduced needle stick injuries.

**High-Flo™
Backcut Needle**

**Other brand
Lancet Needle**

*Actual penetration in simulated skin

safety closure

Refer to the Freedom60® and FreedomEdge® Instructions for Use for a full list of cleared indications for use.

For optimal results and to ensure repeatable flow rates, use ONLY FDA cleared Precision Flow Rate Tubing™ sets and High-Flo Subcutaneous Safety Needle Sets™ with your Freedom device. Use of any other accessories may cause over delivery of fluids, unknown flow rates or additional site complications such as pain, swelling and redness.

Reference:

1. Duff C, Ochoa D, Riley P, Murphy E, Zampelli A. Importance of ancillary supplies for subcutaneous immunoglobulin infusion: management of the local infusion site. *J Infus Nurs.* 2013;36(6):384-390. doi:10.1097/NAN.0000000000000009

TEAR OFF



845•469•2042 | www.korumedical.com